

## Technical Data for PX 300FC/325FC 500FC/525FC

Specification	PX-300FC/PX-MC300FC	PX-500FC/PX-MC500FC
Output Power (As per IS:7620)	24KW	40KW
RadioGraphy Parameters	300mA-100kV	
	500mA-100-kV	
RadioGraphy Parameters	kV Range 45-100 kV (varying type)	
	mA Range Small Focus (50, 100) Large Focus (200, 300)	
Exposure Time	0.2 to 5 Sec.	
	Time Steps 24 Steps 32 Steps Through $\mu$ c	
Fluoro Scopy (optional) Parameters	kV Range 40 to 90 kV in 11 steps mA Range 0-3 mA	
Exposure Release	From Control console with Two step Switch or from examination unit	
Fluoro Scopy Release	From Control console or from examination unit	
Mains Voltage Compensation	Provided (354-447 volts)	
Filament Stabilisation	Provided	
Over Load Protection	Provided, Blocking for any hazardous combination	
Tube Head	Toshiba/other Imported Rotating Anode	Dual Focus 20/40 kW
Collimeter	Manual with electric timer	
HV Cable	Pair of HV cable	
Power Supply 3 Phase	440V+10%-15%, 50Hz 63A,	
Main Resistance	< .36 ohm	

## Quality Approvals

 IS 7620 part 1	 Government of India <b>AERB</b> Atomic Energy Regulatory Board		 ISO 13485:2016
 International Organization for Standardization 9001	 एन एस आई सी <b>NSIC</b>	 MINISTRY OF MSME, GOVT. OF INDIA	

## PROFESSIONAL<sup>TM</sup> IMAGING INC.

Mfr., Importer & Trader of Medical Equipments

H.O. : 14B, PKT-2 Sec.-6, Dwarka, New Delhi-110075  
Phone : +91-11-25083407 Tele Fax : +91-11-45575788  
Mobile : +91-9212766788, +91-9811207356  
E-mail : info@phcindia.com/phcindia75@gmail.com  
Fact : 2074, Modern Industrial Estate (M.I.E), Bahadurgarh,  
Jhajjar, Haryana



# High Class X Ray Imaging Made Affordable



Leadership through Quality & Service  
**PROFESSIONAL IMAGING INC.**

www.phcindia.com



**PX-300/500** X-Ray unit can be used for routine Radiographic and Flouroscopic Diagnostic procedures of the chest, Extremities, skull Skeletal system, Respiratory system, obstetric, pelvis, spinal column and gastro intestinal track and for special investigation including, IVP and HSG examinations.

## Sailent Features

- Radiographic output : 24kw (PX-300) and 40kw (PX-500) as per IS7620(Part2)
- Tube filament current stabilisation through constant voltage transformer (CVT)
- Full wave Rectification
- Digital display of KV,mA and MAS
- Overload protection (Blockage of Exposure)
- Shortest exposure time 10 ms
- Supports serialography upto 6fps



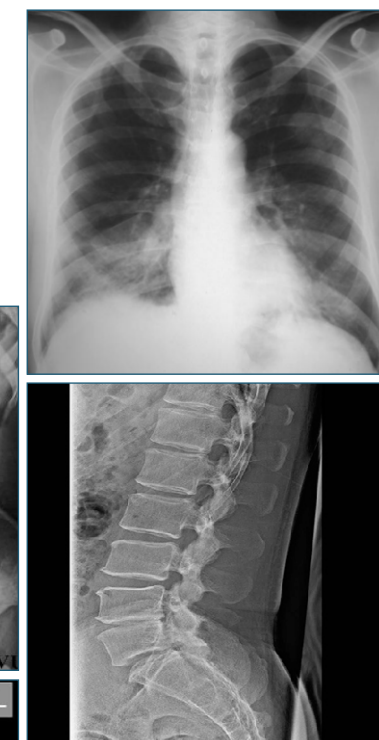
- kv, mA and S valves set with step switches
- Floroscopy time totaliser
- 5 LED indicators for Line, O/L exposure, ready and Bucky in
- Voltage stabilization compensation) through course and fine voltage compensation switches
- Volt meter and mA meter for viewing input line voltage and mA during exposure

## Added Applications

Providing you complete solutions for every application wide range of optional high quality accessories are also available.

All with the guarantee of quality and enduring value, that only professional van provide.

- Radiography and radiography / fluoroscopy floor-to-ceiling column stand.
- Horizontal and manual multi-position bucky examination tables.
- Motor operated table with spot film device
- Image intensifier television option
- Option of single o double tube operation



## PX-MC500

### Features

- Micro Processor based digital control panel for Superior Accuracy, Reproducibility and Stability
- LCD Display for mA, kV, and mAs display
- Digital Timer for Highest Accuracy
- Electronic feather touch membrane keyboard with long life operations
- Easy parameter setting and Firmware upgrade
- Digital Overload Protection Circuit for protection of tube overload & housing overheat.
- Anatomical program with Apr utility: support user programmable 72 conditions and Factors(mAs and Kvp) can be changed during Auto mode
- Complete manual mode Selection available
- Programming can be reprogrammed at user's site.
- X-ray Done confirmation through Audible Alarm.

